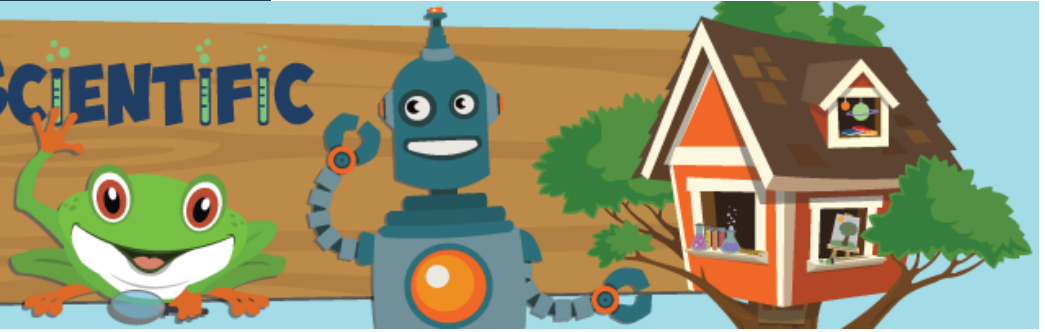


TERRIFIC SCIENTIFIC

Science, Robotics,
and Technology



Camper Welcome Packet

The camper Welcome Packet is published to help parents and campers prepare for a fantastic experience at Terrific Scientific Day Camps!

Your Child's Site Director

We gather as many facts as we can during the camp registration process, however, additional information may need to be communicated to us! Please convey the information in written form, emailed to jlong@terrificscientificNC.org.

Camp Structure

Our camp is broken up into labs which alternate with snack, lunch and two outdoor components to give the campers a balance between academic, social and recreational pursuits.

If you wish to meet your child's counselor, you may accompany them to their classroom on the first day.

What to Send to Camp

Snacks, lunch and drinks for each day

Small water bottle for hydrating during outdoor activities

Hat and sunscreen

What **NOT** to Send

No cell phones, iPods, iPads, gaming devices, fidget spinners, jewelry, cash or other valuables.

Terrific Scientific will not be responsible for items that are lost or stolen.

Just the Facts!

Camps operate Monday-Friday / Monday-Thursday
5-14 years: 9am-3:45pm

Optional 9am-1:00pm for 5-6 year old camps

Pickup is at 1:00pm/3:45pm

Pre-camp begins at 8am (\$25/week)

Post-camp ends at 5:30pm (\$35/week)

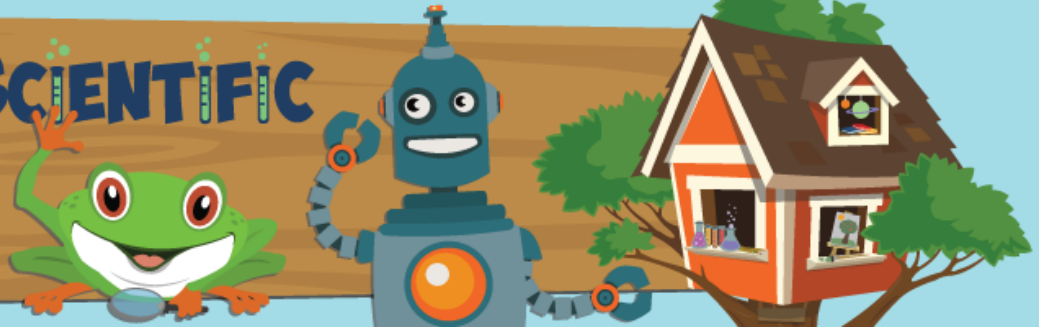
Preferred Camp Apparel

Please dress your child in comfortable clothing (shorts are best!) and sneakers. Campers will receive a complimentary camp Terrific Scientific t-shirt on the first morning of camp. The t-shirt is to be worn each day! We feel that wearing the t-shirt will give campers a sense of belonging and will help them relate to each other. Additional t-shirts may be ordered online at \$15 each.

www.TerrificScientificNC.org

TERRIFIC SCIENTIFIC

Science, Robotics,
and Technology



Camper Welcome Packet

Drop-off and Pick-up

Regular MORNING Drop-Off is 8:50-9:00am. If your child is attending our Pre-Camp program, they may be dropped off at 8:00am.

Look for the **Terrific Scientific** signs directing you to the appropriate entrance for your camp facility. Each location will have a registration table for sign-in. Make sure that you receive your unique ID# for your child's themed camp. A copy of the Activity Schedule will be emailed to you prior to the beginning of camp.

If your child must leave early, please notify the Site Director of this in writing!

Please pick up your child promptly at 3:45pm, unless he or she is attending the Post-Camp program.

SUMMER CAMP FORMS

All summer camp forms are available on our website. Go to the summer camps main page to access the following:

- ⇒ Parent and Camper Evaluation
- ⇒ Summer Camp Planner
- ⇒ Authorization for Administration of Medicine

Note! Once camp is over, we suggest that you go online and fill out the Parent/Camper Evaluation as soon as possible!

FOR CAMPERS:

- Inappropriate language will NOT be permitted.
- Fighting, teasing, bullying or any intimidation by anyone is strictly prohibited—and is cause for dismissal from camp.
- Good sportsmanship is always expected.
- Cell phones are not permitted. Campers are not allowed to use them during camp.
- Camp t-shirts must be worn each day.
- Campers are expected to treat each other, the staff and the facility with respect.

For Campers' Parents:

Gratuities

Tipping at our Summer Camps is strictly prohibited! Instead, our staff members can earn performance bonuses based on evaluations completed by you and their Site Directors.

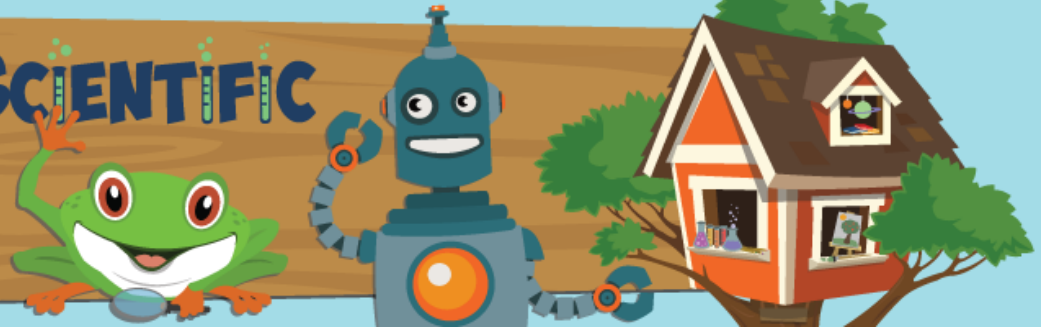
Evaluate!

If you would like to show your appreciation for a staff member, please fill out the online Parent and Camper Evaluation Form.

www.TerrificScientificNC.org

TERRIFIC SCIENTIFIC

Science, Robotics,
and Technology



Gamper Welcome Packet

Personal Belongings

Terrific Scientific is NOT responsible for **personal belongings** brought to camp. Please label all of your child's items, such as a lunch box, water bottle, etc.

Camp Visitation

Parents may visit on Friday afternoons, when campers enjoy showcasing their projects. Robot competitions, rocket launches, and video game presentations are a fun way to end the week. Friday is our special event day when we really like to have tons of fun!

Gamper Safety During Checkout

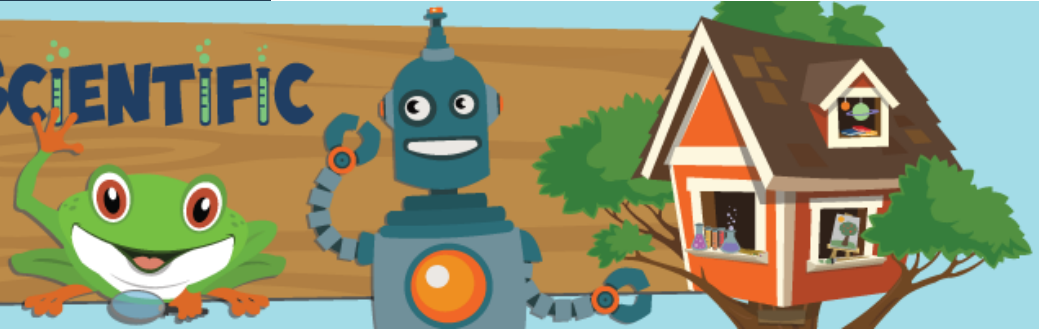
Parents must present their child's unique ID number when picking up their child. Parents are not permitted beyond the registration desk into the classrooms. We will bring your child to you for dismissal. If you would like to talk to your child's counselor, just let us know.

Gamp Programs:

Ages 5-6	Ages 6-8	Ages 9-14	
Jr. Chemist	ArcadeCAMP Scratch	3D Printing & Pens (11+)	Minecraft 3D Supreme (8-12)
Jr. Paleontologist	Can You Dig It	Aerial Robotics:	Minecraft Modding
Little Bot Programmer	CityCAMP WeDo	Hovercrafts (11+)	Programming w/ Dash & Dot (9)
Little Scientist	Coding with Roblox	Aerial Robotics:	Robot Adv: Scribblebot (11+)
Little Zoologist	Experience the Cosmos	Quadcopters (11+)	Robot Engineer (9-11)
Toy Engineer	Future Medical Specialist	Applied Robotics with Cue (10+)	Robot Explorer: mBot (11+)
	Future Physician	ArcadeCAMP Scratch (8-11)	Robot Explorer: Ozobots (7-10)
	Future Robot Creator	Baker's Delight	Robots Gadgets&Gizmos (9-12)
	LEGO Imagineer	BioEngineering (10+)	Space Engineer (9)
	Intro to Programming	Chefology	Special Effects (9-11)
	Minecraft 3D Adventures	CityCAMP WeDo (9)	Young Marine Biologist (9 yo)
	Minecraft 3D Supreme	Coding with Roblox (9-12)	Young Surgeon (10-12)
	Minecraft Modding	Emergency Vet Tech (9-11)	
	Mini-Chef	Experience the Cosmos (7-10)	
	Program w/ Dash & Dot	Extreme Phenomena (8-11)	
	Robot Explorer: Ozobots	Forensic CSI Advanced (11+)	
	SafariCAMP WeDo	Intro to Programming (7-10)	
	Space Engineer	LEGO Imagineer (9)	
	Young Robot Builder	LEGO Robotics I & II	
	Young Marine Biologist	LEGO Robotics Battle Bots	
	Young Scientist	Manga Maker Comics (11+)	

TERRIFIC SCIENTIFIC

Science, Robotics,
and Technology



Camper Welcome Packet

It's all about your camper's

Health and Safety

- ◆ In order for our Site Directors to administer medication to your child at any time during camp, you and your child's physician MUST complete the "Authorization of Medication" form.
- ◆ Medication must be sent to camp in its original bottle. The medical authorization form can be downloaded from our website.
- ◆ If your child is ill and will not be attending camp, please notify the Terrific Scientific main office.
- ◆ Please do not send your child to camp if he/she is not feeling well.
- ◆ If your child becomes ill during camp, we will use the emergency contact numbers you have provided.
- ◆ Any time you are visiting the camp, please have your child's ID number and enter the main camp entrance of the building.
- ◆ Remember that parents are NOT permitted beyond the registration table. You will be issued a name tag if you attend a Friday event day.
- ◆ Campers must bring their own lunch, drinks, and snacks each day. Please do NOT send items that must be heated in the microwave oven. Also, we do NOT have refrigeration at most locations, so a cold pack included in the lunch box is a good idea.
- ◆ Due to food allergy concerns, please refrain from packing peanut butter or other nut products.

YOUR CHILD HAS SOME EXCITING TIMES AHEAD, AS THEY EXPERIENCE A WEEK OF UNIQUE HANDS-ON/MINDS-ON INQUIRY BASED PROJECTS AND EXPERIMENTS.

Email: jlong@terrificscientificNC.org

Phone: (o) 704-774-3016 (c) 704-941-0074

*We look forward
to seeing you
this summer!*

www.TerrificScientificNC.org