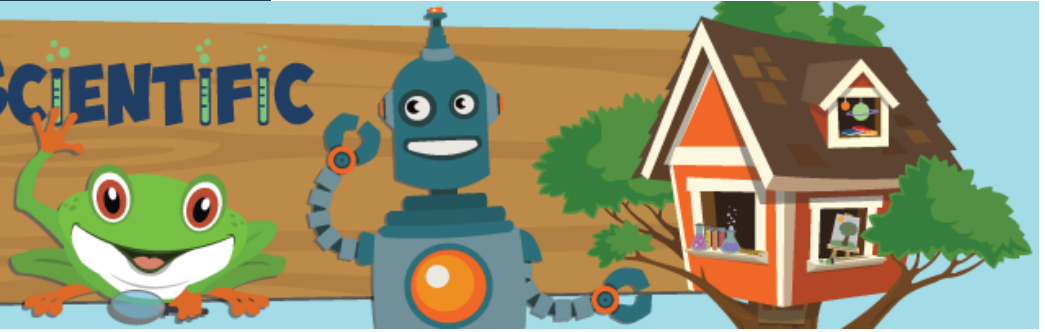


TERRIFIC SCIENTIFIC

Science, Robotics,
and Technology



Camper Welcome Packet

The camper Welcome Packet is published to help parents and campers prepare for a fantastic experience at Terrific Scientific Day Camps!

Your Child's Site Director

We gather as many facts as we can during the camp registration process, however, additional information may need to be communicated to us! Please convey the information in written form, emailed to jlong@terrificscientificNC.org.

Camp Structure

Our camp is broken up into labs which alternate with snack, lunch and two outdoor components to give the campers a balance between academic, social and recreational pursuits.

If you wish to meet your child's counselor, you may accompany them to their classroom on the first day.

What to Send to Camp

- Snacks, lunch and drinks for each day
- Small water bottle for hydrating during outdoor activities
- Hat and sunscreen

What **NOT** to Send

- No cell phones**, iPods, iPads, gaming devices, fidget spinners, jewelry, cash or other valuables.

Terrific Scientific will not be responsible for items that are lost or stolen.

Just the Facts!

Camps operate Monday-Friday / Monday-Thursday
5-14 years: 9am-3:45pm

Optional 9am-1:00pm for 5-6 year old camps

Pickup is at 1:00pm/3:45pm

Pre-camp begins at 8am (\$25/week)

Post-camp ends at 5:30pm (\$35/week)

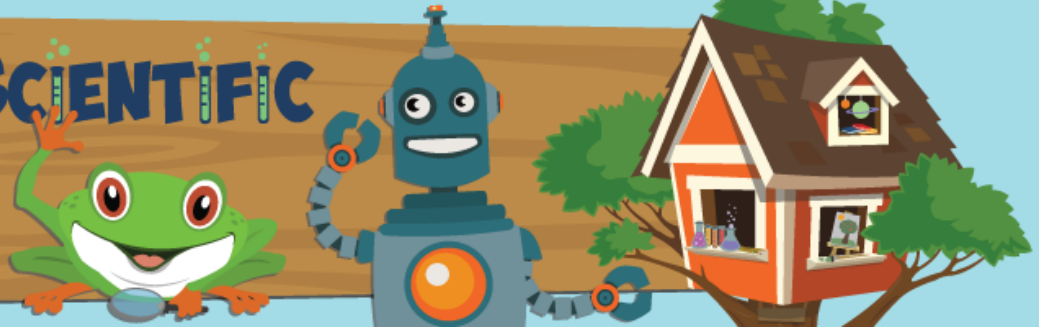
Preferred Camp Apparel

Please dress your child in comfortable clothing (shorts are best!) and sneakers. Campers will receive a complimentary camp Terrific Scientific t-shirt on the first morning of camp. The t-shirt is to be worn each day! We feel that wearing the t-shirt will give campers a sense of belonging and will help them relate to each other. Additional t-shirts may be ordered online at \$15 each.

www.TerrificScientificNC.org

TERRIFIC SCIENTIFIC

Science, Robotics,
and Technology



Camper Welcome Packet

Drop-off and Pick-up

Regular MORNING Drop-Off is 8:50-9:00am. If your child is attending our Pre-Camp program, they may be dropped off at 8:00am.

Look for the **Terrific Scientific** signs directing you to the appropriate entrance for your camp facility. Each location will have a registration table for sign-in. Make sure that you receive your unique ID# for your child's themed camp. A copy of the Activity Schedule will be emailed to you prior to the beginning of camp.

If your child must leave early, please notify the Site Director of this in writing!

Please pick up your child promptly at 3:45pm, unless he or she is attending the Post-Camp program.

SUMMER CAMP FORMS

All summer camp forms are available on our website. Go to the summer camps main page to access the following:

⇒ Authorization for Administration of Medicine

FOR CAMPERS:

- Inappropriate language will NOT be permitted.
- Fighting, teasing, bullying or any intimidation by anyone is strictly prohibited—and is cause for dismissal from camp.
- Good sportsmanship is always expected.
- Cell phones are not permitted. Campers are not allowed to use them during camp.
- Camp t-shirts must be worn each day.
- Campers are expected to treat each other, the staff and the facility with respect.

FOR CAMPERS' PARENTS:

Gratuities

Tipping at our Summer Camps is strictly prohibited! Instead, our staff members can earn performance bonuses based on evaluations completed by you and their Site Directors.

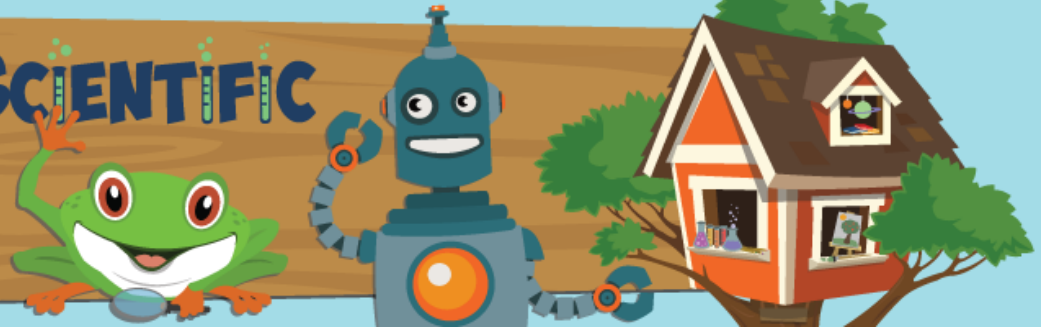
Evaluate!

If you would like to show your appreciation for a staff member, please fill out the online Parent and Camper Evaluation Form.

www.TerrificScientificNC.org

TERRIFIC SCIENTIFIC

Science, Robotics,
and Technology



Camper Welcome Packet

Personal Belongings

Terrific Scientific is NOT responsible for **personal belongings** brought to camp. Please label all of your child's items, such as a lunch box, water bottle, etc.

Camp Visitation

Parents may visit on Thursday/Friday afternoons, when campers enjoy showcasing their projects. Robot competitions, rocket launches, and video game presentations are a fun way to end the week.

Camper Safety During Checkout

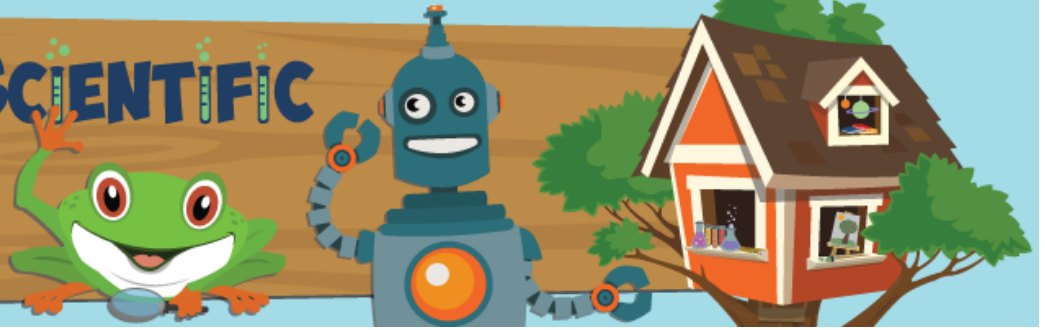
Parents must present their child's unique ID number when picking up their child. Parents are not permitted beyond the registration desk into the classrooms. We will bring your child to you for dismissal. If you would like to talk to your child's counselor, just let us know.

Camp Programs:

Ages 5-6	Ages 6-8	Ages 9-14	
Jr. Chemist	ArcadeCAMP Scratch	Aerial Robotics:	LEGO Imagineer (9)
Jr. Paleontologist	Can You Dig It	Hovercrafts (11+)	LEGO Robotics Battle Bots
Little Bot Programmer	Experience the Cosmos	Aerial Robotics:	Magical & Mystical: Harry Potter
Little Maker	Extreme Phenomena	Quadcopters (11+)	Manga Maker Comics (11+)
Little Scientist	Future Medical Specialist	ArcadeCAMP Scratch (11)	Mechatronics
Little Zoologist	Future Physician	BioEngineering (10+)	Minecraft 3D Supreme (12)
Toy Engineer	Future Robot Creator	Chemistry Concoctions (11+)	Minecraft Modding
	Future Robot Maker	Coding Python	Robots Gadgets&Gizmos (12)
	Intro to Programming	& JavaScript (11+)	Scibot (11+)
	Lego Imagineer	Coding with Roblox (12)	Secret Agent (9)
	Minecraft 3D Adventures	Crime Scene Investigator (11)	Space Engineer (9)
	Minecraft 3D Supreme	Deep Space Explorer (12)	Special Effects (11)
	Minecraft Modding	Emergency Vet Tech (11)	Tinkercode (11)
	Mini-Chef	Experience the Cosmos (10)	Ultimate Escape Room (11+)
	Pirate Adventures	Extreme Phenomena (11)	Video Game Factory (11)
	Robocoding	Forensic CSI (11+)	Young Marine Biologist (9)
	Secret Agent	Imagine the Future (10+)	Young Surgeon (10-12)
	Space Engineer	Intro to Programming (10)	
	Star Wars Galactic	Imagineering (12)	
	STEAM Explosion	Kitchen Chemistry Chaos (11)	
	Video Game Factory		
	Young Marine Biologist		
	Young Robot Builder		
	Young Scientist		

TERRIFIC SCIENTIFIC

Science, Robotics,
and Technology



Camper Welcome Packet

It's all about your camper's

Health and Safety

- ◆ In order for our Site Directors to administer medication to your child at any time during camp, you and your child's physician MUST complete the "Authorization of Medication" form.
- ◆ Medication must be sent to camp in its original bottle. The medical authorization form can be downloaded from our website.
- ◆ If your child is ill and will not be attending camp, please notify the Terrific Scientific main office.
- ◆ Please do not send your child to camp if he/she is not feeling well.
- ◆ If your child becomes ill during camp, we will use the emergency contact numbers you have provided.
- ◆ Any time you are visiting the camp, please have your child's ID number and enter the main camp entrance of the building.
- ◆ Remember that parents are NOT permitted beyond the registration table. You will be issued a name tag if you attend a Friday event day.
- ◆ Campers must bring their own lunch, drinks, and snacks each day. Please do NOT send items that must be heated in the microwave oven. Also, we do NOT have refrigeration at most locations, so a cold pack included in the lunch box is a good idea.
- ◆ Due to food allergy concerns, please refrain from packing peanut butter or other nut products.

Your child has some exciting times ahead as they experience a week of unique hands-on/minds-on inquiry based projects and experiments.

Email: [jlong@terrificscientificNC.org](mailto: jlong@terrificscientificNC.org)

Phone: 704-774-3016

*We look forward
to seeing you
this summer!*

www.TerrificScientificNC.org