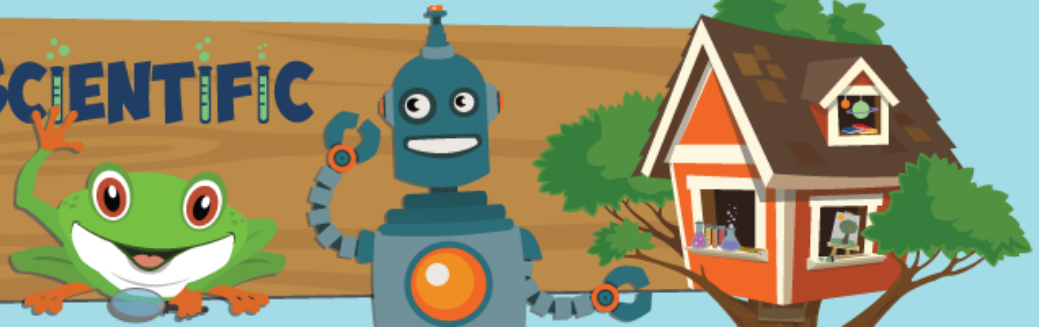


TERRIFIC SCIENTIFIC

Science, Robotics,
and Technology



Camper Welcome Packet

The camper Welcome Packet is published to help parents and campers prepare for a fantastic experience at Terrific Scientific Day Camps!

Your Child's Site Director

We gather as many facts as we can during the camp registration process, however, additional information may need to be communicated to us! Please convey the information in written form, emailed to jlong@terrificscientificNC.org.

**Just the
Facts!**

Camp Structure

Camps operate Monday—Friday

9am—3:45pm

Our camp is broken up into labs which alternate with snack, lunch and two outdoor components to give the campers a balance between academic, social and recreational pursuits.

What to Send to Camp

- Snacks, lunch and drinks each day
- Small water bottle for hydrating during outdoor activities
- Disposable or cloth face mask
- Hat and sunscreen

What **NOT** to Send

- Cell phones, iPods, iPads, gaming devices, fidget spinners, toys, jewelry, cash or other valuables.

Terrific Scientific will not be responsible for items that are lost or stolen.

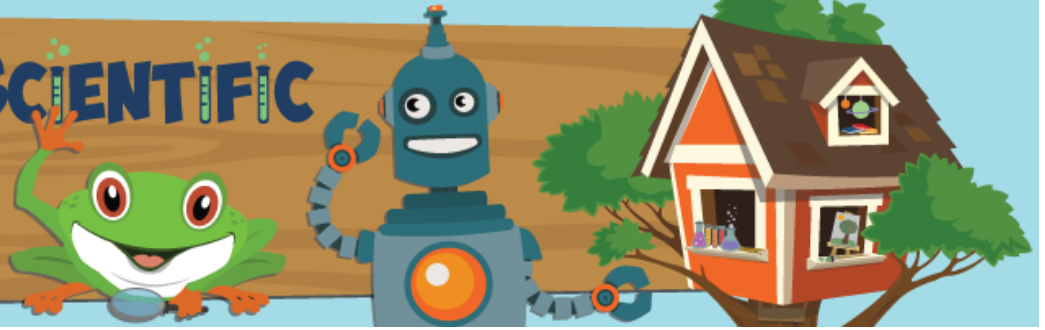
Preferred Camp Apparel

Please dress your child in comfortable clothing (shorts are best!) and sneakers. Campers will receive a complimentary camp Terrific Scientific t-shirt on the first morning of camp, while supplies last.

www.TerrificScientificNC.org

TERRIFIC SCIENTIFIC

Science, Robotics,
and Technology



Camper Welcome Packet

Drop-off and Pick-up

MORNING Drop-Off begins at 8:50. Please be patient as we perform health screenings.

Look for the **Terrific Scientific** signs directing you to the appropriate entrance for your camp. Your child should remain at the car until their health screening is complete.

Make sure that you receive your unique ID# for your child's themed camp. A copy of the Activity Schedule will be emailed to you prior to the beginning of camp.

If you arrive after camp has begun, please call the phone number posted at camp and a staff member will meet your child at the car to perform the health screening.

If your child must leave early, please notify the Site Director of this in writing!

Please pick up your child promptly at 3:45pm. Remain in the car. Your child will be brought to you.

SUMMER CAMP FORMS

All summer camp forms are available on our website. Go to the summer camps main page to access the following:

⇒ Authorization for Administration of Medicine

FOR CAMPERS:

- Inappropriate language will NOT be permitted.
- Fighting, teasing, bullying or any intimidation by anyone is strictly prohibited—and is cause for dismissal from camp.
- Good sportsmanship is always expected.

FOR CAMPERS' PARENTS:

Gratuities

Tipping at our Summer Camps is strictly prohibited! Instead, our staff members can earn performance bonuses based on evaluations completed by you and their Site Directors.

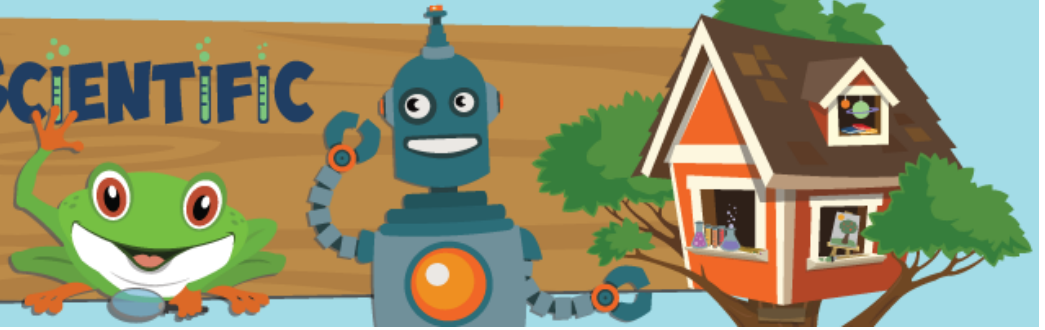
Evaluate!

If you would like to show your appreciation for a staff member, please email us your rave review!

www.TerrificScientificNC.org

TERRIFIC SCIENTIFIC

Science, Robotics,
and Technology



Camper Welcome Packet

Personal Belongings

Terrific Scientific is NOT responsible for **personal belongings** brought to camp. Please label all of your child's items, such as a lunch box, water bottle, etc.

Camp Visitation

Due to COVID-19 only campers and staff are allowed at camp this summer.

Camper Safety During Checkout

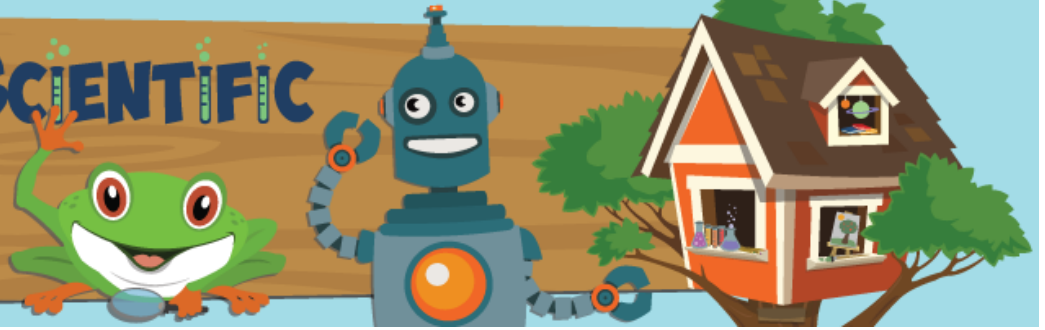
Parents must place their child's unique ID number on the front windshield of the car when picking up their child. Please remain in your car. We will bring your child to you.

Camp Programs:

Grades K-1	Grades 1-3	Grades 4-8
<p>Jr. Chemist Jr. Paleontologist Little Scientist Toy Engineer</p>	<p>ArcadeCAMP Scratch Can You Dig It Experience the Cosmos Future Medical Specialist Future Physician Future Robot Creator Future Robot Maker Intro to Programming Lego Imagineer Minecraft 3D Adventures Minecraft 3D Supreme Pirate Adventures Robocoding Space Engineer Young Marine Biologist Young Robot Builder Young Scientist</p> <p>Please see website for specific grade recommendations</p>	<p>Aerial Robotics: Quadcopters (Gr 6-8) ArcadeCAMP Scratch (Gr 3-6) Chemistry Concoctions (Gr 6-8) Coding with Roblox Emergency Vet Tech Experience the Cosmos (Gr 2-5) Intro to Programming (Gr 2-5) Minecraft 3D Supreme (Gr 3-8)) Minecraft Modding (Gr 4-8) Robots Gadgets & Gizmos (Gr 4-7) Space Engineer (Gr 2-4) Special Effects (Gr 4-6) Star Wars Galactic (Gr 4-6) Young Marine Biologist (Gr 2-4) Young Robot Builder (Gr 2-4) Young Surgeon (Gr 4-7)</p> <p>Camps with overlapping age groups are held as ONE camp group.</p>

TERRIFIC SCIENTIFIC

Science, Robotics,
and Technology



COVID-19 Safety Procedures

As we welcome campers and staff back to camp in 2021, safety is our top priority. Our comprehensive COVID-19 plan is designed to protect Terrific Scientific campers, families and staff in an on-site environment that minimizes risk and maximizes fun. We will continue to adapt our practices to match local mandates as they evolve.

CAMPER COHORTS

- ◆ Campers are grouped in stable cohorts of no more than 10 campers
- ◆ Each cohort is supervised by one or two consistent staff members that don't interact with other cohorts
- ◆ Cohorts stay separate from other cohorts both indoors and outdoors
- ◆ Sharing of supplies will be limited as much as possible; any supplies shared within cohorts will be limited to a consistent pod of four campers and disinfected daily

SAFETY TRAINING

- ◆ Staff and families receive training regarding safety guidelines and expectations at camp
- ◆ Signage will be displayed throughout the camp facility regarding safety measures and reminders for healthy hygiene habits.

CAMPER AND STAFF SCREENING

- ◆ Campers and staff complete daily health screenings before being admitted to camp
- ◆ Campers and staff that present with symptoms of infectious illness during the day will be sent home and asked to consult with their healthcare provider to determine if COVID-19 testing is recommended

MASKING AND DISTANCING

- ◆ All campers and staff wear masks when at camp (except when eating or drinking); we provide extra masks for staff and campers as needed
- ◆ All individuals at camp maintain a minimum of six feet of social distance between them, except to provide developmentally appropriate support or supervision (for example, a staffer applying first aid, helping a young camper open a snack, etc.)

CONTACT REDUCTION

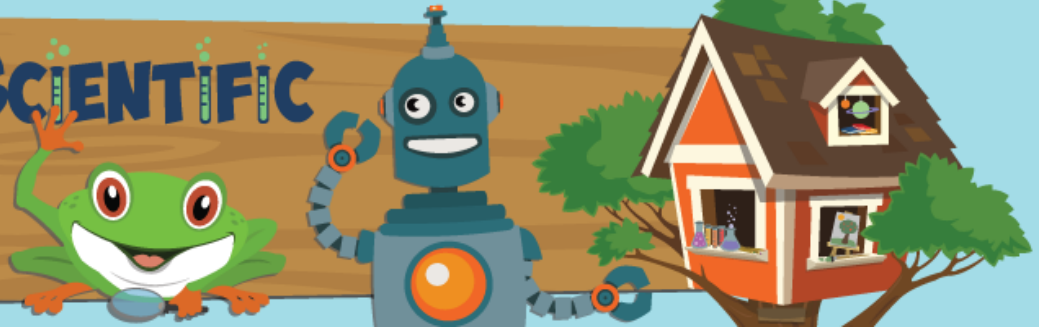
- ◆ Staggered camper drop-off and pick-up locations
- ◆ Campers bring their own snacks and lunch to camp
- ◆ Extended camp care, full camp morning meeting and in person Family Day activities are suspended

HANDWASHING AND SANITIZING

- ◆ Campers and staff practice frequent handwashing and hand sanitizing (before and after snack and lunch, between activities, before and after using the restroom, after sneezing, etc.)
- ◆ We sanitize high-touch surfaces for indoor and outdoor classrooms between each activity
- ◆ When supplies must be used by multiple cohorts, they will be disinfected between each cohort's use

TERRIFIC SCIENTIFIC

Science, Robotics,
and Technology



It's all about your camper's

Health and Safety

- ◆ In order for our Site Directors to administer medication to your child at any time during camp, you and your child's physician **MUST** complete the "Authorization of Medication" form.
- ◆ Medication must be sent to camp in its original bottle. The medical authorization form can be downloaded from our website.
- ◆ If your child is ill and will not be attending camp, please notify the Terrific Scientific main office.
- ◆ Please do not send your child to camp if he/she is not feeling well.
- ◆ If your child becomes ill during camp, we will use the emergency contact numbers you have provided.
- ◆ Any time you are visiting the camp, please have your child's ID number.
- ◆ Remember that parents are **NOT** permitted inside the camp facility. Parents must maintain a distance of 6ft from other families outdoors.
- ◆ Campers must bring their own lunch, drinks, and snacks each day. Please do **NOT** send items that must be heated in the microwave oven. Also, we do **NOT** have refrigeration at most locations, so a cold pack included in the lunch box is a good idea.
- ◆ Due to food allergy concerns, please refrain from packing peanut butter or other nut products.

Your child has some exciting times ahead as they experience a week of unique hands-on/ minds-on inquiry based projects and experiments.

Email: jlong@terrificscientificNC.org

Phone: 704-774-3016

*We look forward
to seeing you
this summer!*